



MINISTRY
OF REGIONAL
DEVELOPMENT CZ

European Territorial Cooperation Programmes INTERREG EUROPE, INTERREG CENTRAL EUROPE and INTERREG DANUBE

MINISTRY OF REGIONAL DEVELOPMENT CZ

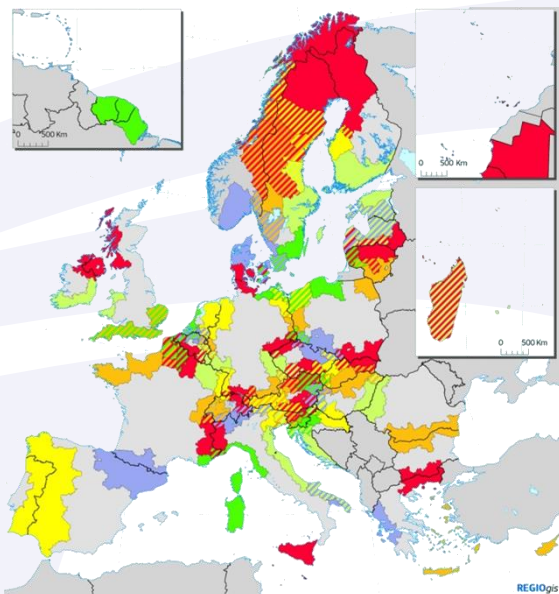
Praha 7. 6. 2018



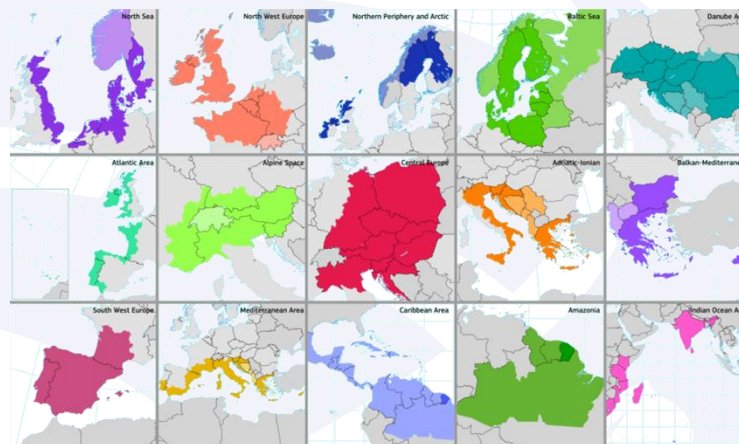
MINISTRY
OF REGIONAL
DEVELOPMENT CZ

European Territorial Cooperation

Crossborder Cooperation = 60 programmes



Transnational Cooperation = 15 programmes



Interregional Cooperation =
4 programmes





**Objective 2:
European Territorial Cooperation
in the Czech Republic**

Crossborder Cooperation	Transnational Cooperation	Interregional Cooperation
CZ – PL € 226,2 mil.	Interreg Central Europe € 246,6 mil.	Interreg Europe € 359,3 mil.
AT – CZ € 97,8 mil.	Interreg DANUBE € 221,9 mil.	ESPON 2020 € 41.4 mil.
Bavaria – CZ € 103,4 mil.		INTERACT III € 39.4 mil.
Saxony – CZ € 157,9 mil.		URBACT III € 74,3 mil.
SVK – CZ € 90,1 mil.		



MINISTRY
OF REGIONAL
DEVELOPMENT CZ

Geography and alocation of the programmes

INTERREG CENTRAL EUROPE

9 EU member states

MA – City of Vienna



246,5 mil EUR ERDF

INTERREG DANUBE

9 EU member states
+ 5 non EU member states

MA – Ministry for National Economy
(Hungary)

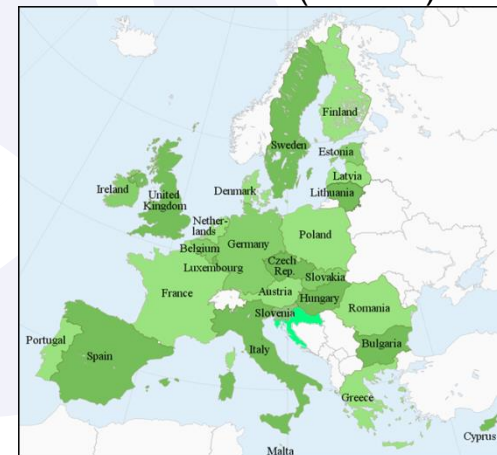


221,9 mil EUR ERDF/IPA/ENI

INTERREG EUROPE

28 EU member states
+ 2 non EU member states

MA – Regional Copuncil of
Hauts-de-France (France)



359,3 mil EUR ERDF



MINISTRY
OF REGIONAL
DEVELOPMENT CZ

Objective of programmes

Interreg Central Europe a Interreg Danube

Development and strengthen cooperation and coordination of actors in broader Transnational area in order to solve common regional challenges in respective thematic areas.

Interreg Europe

To strengthen effectiveness of Cohesion Policy via:

- identification, sharing and transferring good practices particularly to programmes for Investments for Growth and Jobs and where relevant to European Territorial Cooperation programmes.



MINISTRY
OF REGIONAL
DEVELOPMENT CZ

Thematic Focus

INTERREG EUROPE

CENTRAL EUROPE

DANUBE



Research and Innovation



Competitiveness of SMEs



Low Carbon Economy



•Protecting the environment and promoting resource efficiency



Transport and Energy



Institutional Capacity



Project Features

Lead partner

- › From EU member state
 - › Responsible for coordination and implementation of a project
 - › Concludes a subsidy contract with MA
 - › Ensures that expenditures of project partners and his/her were verified by controllers
 - › Submits requests for reimbursement for the entire project
 - › Reimburses the funds to project partners
-
- Partners at least from 3 countries
 - Recommended size of the partnership - 5 – 15 partners
 - Soft project focus on Exchange of experiences and capacity building
 - NO research or investment programmes
 - English = official language
 - Project duration 3 years (can be adjusted)
 - Ex post financing



Main project results

Capacity building

- Definition of common problems/challenges.
- Clear mid/long-term objectives and priorities reflecting common vision in specific field.
- Involvement of stakeholders in order to ensure durability a implementation of the results.

Action plan

- should break down the strategy goals and objectives into specific actions.
- sequence of steps to be taken, or activities that must be performed, for a strategy to succeed. time line, the financial resources and a definition of the responsible actors.

Strategies/action plans

Pilot activities/investments

A pilot action is to be understood as a practical implementation of newly developed solutions (e.g. services, tools, methods or approaches, even an investment). A pilot action has an experimental nature which aims at testing, evaluating and/or demonstrating the feasibility and effectiveness of a scheme.

Process of strengthening of institutional knowledge via shared good practices focus on practical solutions, know-how transfer, capacity building, knowledge sharing, peer-review and learning from others.


- the means for achieving a specific task. Tools should be jointly developed at transnational level and be innovative.
- Tools can be **tangible** (physical or technical objects) and **intangible** (methods, concepts or services). They comprise amongst others of analytical tools, management tools, technical tools, software.

Tools



Eligible Beneficiaries

- **Public Bodies** (municipalities, national, regional and local authorities)
- **Bodies govern by public law** (public universities, development agencies, public research institutions...etc)
- **Private bodies** (INTERREG EUROPE supports only private no-profit!!!)

 The main target group of all programmes are bodies, that have capacity to influence the development in a field/policy that is targeted by the project – e.g. regional authorities, ministries...



Co-financing

- **85%** z ERDF for all beneficiaries
- ex.-post reimbursement
- Average budget per partner 100 000 – 300 000. EUR
- Project budget 1 mil. – 5 mil. EUR



Eligibility of expenditures

6 budget lines:

1. Staff costs
2. Administrative costs
3. Travel and accommodation
4. External services
5. Equipment
6. Infrastructure and works



Next Calls

Programme	Call	Date	Remaining allocation
Interreg Central Europe	4th Call (last)	1.Q 2019 ???	Approx. 15 mil. EUR
Interreg Danube	3rd Call (last?)	4.Q 2018 ???	Approx. 60 mil. EUR

The most common mistakes – project preparation

General

- Activities in different WPs are overlapping;
- The project focus is too broad;
- Intervention logic not understood correctly: e.g. main project result is described as an activity. The project impact is unclear;
- Consistency of the project data varies in the application form
- The added value of the project is not sufficiently demonstrated – reference to running or closed project in the same field are missing;

Partnership

- Not sufficient involvement of relevant bodies key for the theme tackled (or only as ASP); Project partner need to clearly show their relevance for the theme;
- Target groups vaguely defined
- Partner budgets do not reflect their involvement in the project. Most of the project goes to only limited number of partners or countries. ;

Pilot activities

- Do not show Transnational character . Only local impact

Budget

- value for money is not demonstrated - planned activities, number of partners do not correspond to the planned budget



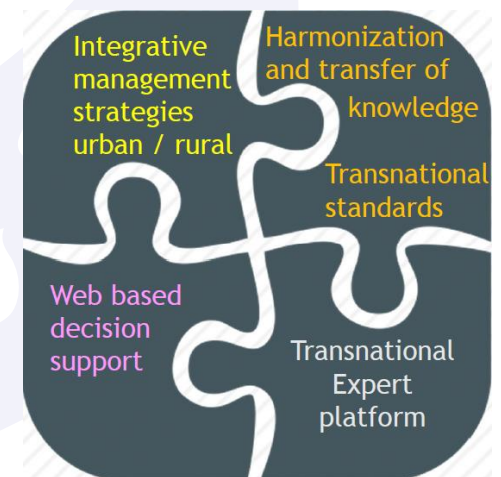
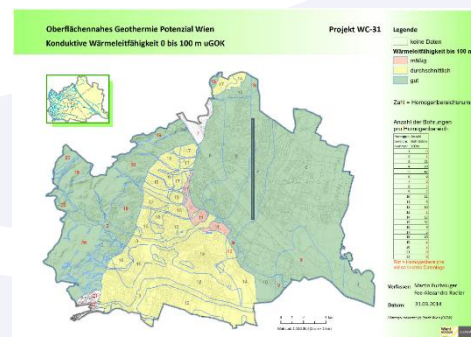
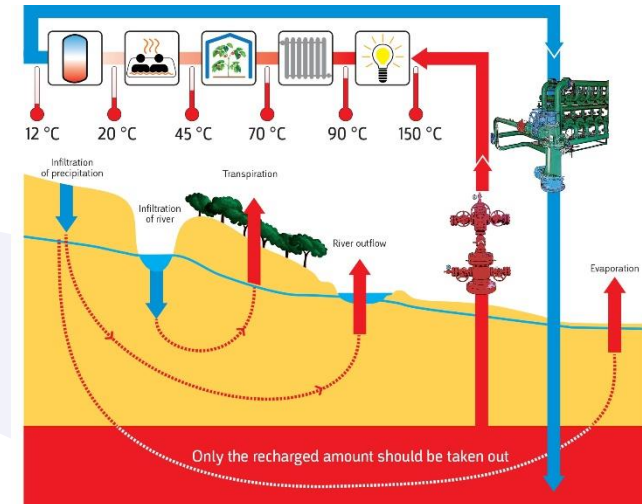
Darlinge + Geoplasma

Sustainable use of geothermal sources for heating and cooling:

- deep geothermal source
- shallow geothermal source

To increase the share of renewable energy sources and development of a tool-box for public and private stakeholders:

- Overview of different technologies
- Possible risks





MINISTRY
OF REGIONAL
DEVELOPMENT CZ

Reef2W

Energy from Wastewater

- the integration and optimization of wastewater treatment plants and municipal waste management systems. – produce of surplus of renewable energy;
 - Usage of waste water heat
 - Energy from waste water flows
 - Increase of energy production from biogas and heat.
-
- Overview of current technologies
 - New models of cooperation
 - Elaboration of strategies for wastewater heat usage.

Wastewater has an untapped energy potential of 87,500 GWh... as much as the yearly production of 12 large power plants!

Wastewater means energy





3SMART

energy-efficiency measures and renewable energy are not follow by optimal interaction models

- allow distribution system operators to introduce energy exchange with buildings through dynamically changing conditions, e.g. via optimized hourly price profiles.
- to provide a technological and legislative setup for cross-spanning energy management of buildings, grids and major city infrastructures
- to provide optimal economical value to energy-efficiency and renewable energy investment in buildings
- to optimize costs on the grid side whereas grid and buildings will also interact through exchanging energy and prices data.





MINISTRY
OF REGIONAL
DEVELOPMENT CZ

eCentral

nearly Zero Energy Buildings

- optimal and cost-effective solution for the renovation and construction of public buildings
- capitalise on results of previous and ongoing EU initiatives
- develop an Energy Performance Certificate - EPC Tool for public authorities
- deploy and promote innovative financing schemes
- develop training programmes
- assist nZEB projects
- develop building renovation strategies
- establish cooperation with scientific institutions and other nZEB initiatives

Interreg
CENTRAL EUROPE



European Union
European Regional
Development Fund

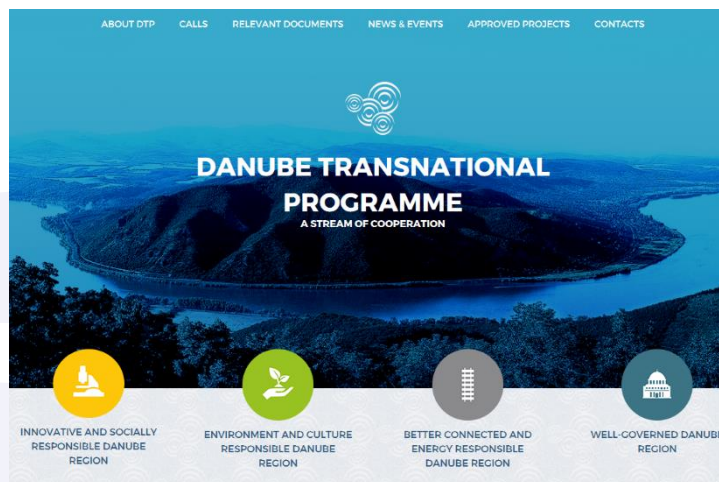
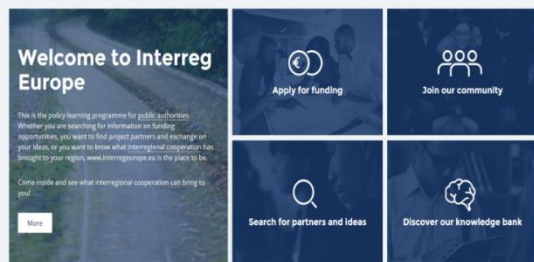
eCentral



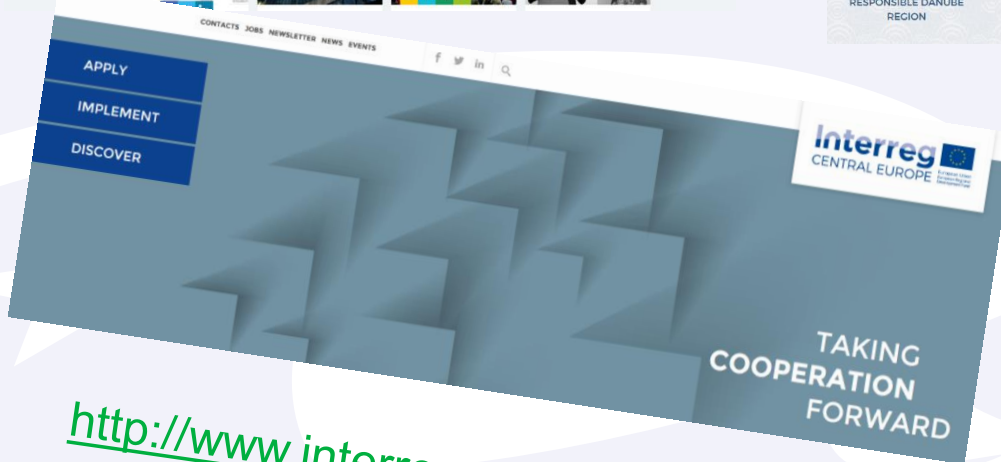
MINISTRY
OF REGIONAL
DEVELOPMENT CZ

Further information

<http://www.interregeurope.eu/>



<http://www.interreg-danube.eu/>



<http://www.interreg-central.eu/>

ESPON

ESPON 2020 – vědecké nástroje, kontakty

Vědecké nástroje



- Databáze ESPON
- Data Navigator
- ESPON HyperAtlas
- ETMS

www.espon.eu

www.dotaceeu.cz

www.uur.cz

• mailing list - veškeré aktuální informace na požádání



<http://www.espon.eu>



MINISTRY
OF REGIONAL
DEVELOPMENT CZ

Further information

<http://www.dotaceeu.cz/cs/Evropske-fondy-v-CR/2014-2020/Operacni-programy>



DotaceEU.cz

Zastřešující portál Evropských
strukturálních a investičních fondů v ČR

Zde zadejte hledaný výraz



Přihlásit se

English



Jak evropské dotace
pomáhají



Jak získat dotaci



Evropské fondy v ČR



Statistiky a analýzy



Kontakty

Evropské fondy v ČR

Fondy Evropské unie zahrnují širokou škálu nástrojů, které slouží k podpoře vyváženého rozvoje regionů EU s důrazem na snížení sociálních a ekonomických rozdílů. Česká republika z evropských fondů čerpá již od svého vstupu do EU v roce 2004. Celkově měla možnost čerpat ve třech programových obdobích a v současné době probíhá příprava na další, které začne po roce 2020. Od doby vstupu ČR do EU zastává koordinační roli Národní orgán pro koordinaci Ministerstva pro místní rozvoj.

Více o fondech EU

Novinky

Informace o fondech

Národní orgán pro koordinaci

Programové období po roce 2020

Programové období 2014-2020

Programové období 2007-2013

Programové období 2004-2006

Bulletin Oko NOKu

Slovník pojmů



Contacts

CENTRAL EUROPE

Stella Horváthová

Ministerstvo pro místní rozvoj
Odbor evropské územní
spolupráce

Letenská 3
110 15 Praha
Tel: 224 862 213
Email: horste@mmr.cz
nadnarodni@mmr.cz

DANUBE

Tereza Tkadlečková

Ministerstvo pro místní rozvoj
Odbor Evropské územní
spolupráce

Letenská 3
110 15 Praha
tel: +420 224 862 260
e-mail: tkater@mmr.cz
nadnarodni@mmr.cz

INTERREG EUROPE

**Alice Štollová Kovandová
Pavel Lukeš**

Ministerstvo pro místní rozvoj
Odbor evropské územní
spolupráce

Letenská 3
110 15 Praha
Tel: 224 862 254, 224 862 331
Email: alice.stollova@mmr.cz
Pavel.lukes@mmr.cz
meziregionalni@mmr.cz



MINISTRY
OF REGIONAL
DEVELOPMENT CZ

Thank you for your Attention

Pavel Lukeš

Department of European Territorial Cooperation

Ministry of Regional Development CZ

E-mail: pavel.lukes@mmr.cz

Telefon: 224 862 331

www.dotaceEU.cz